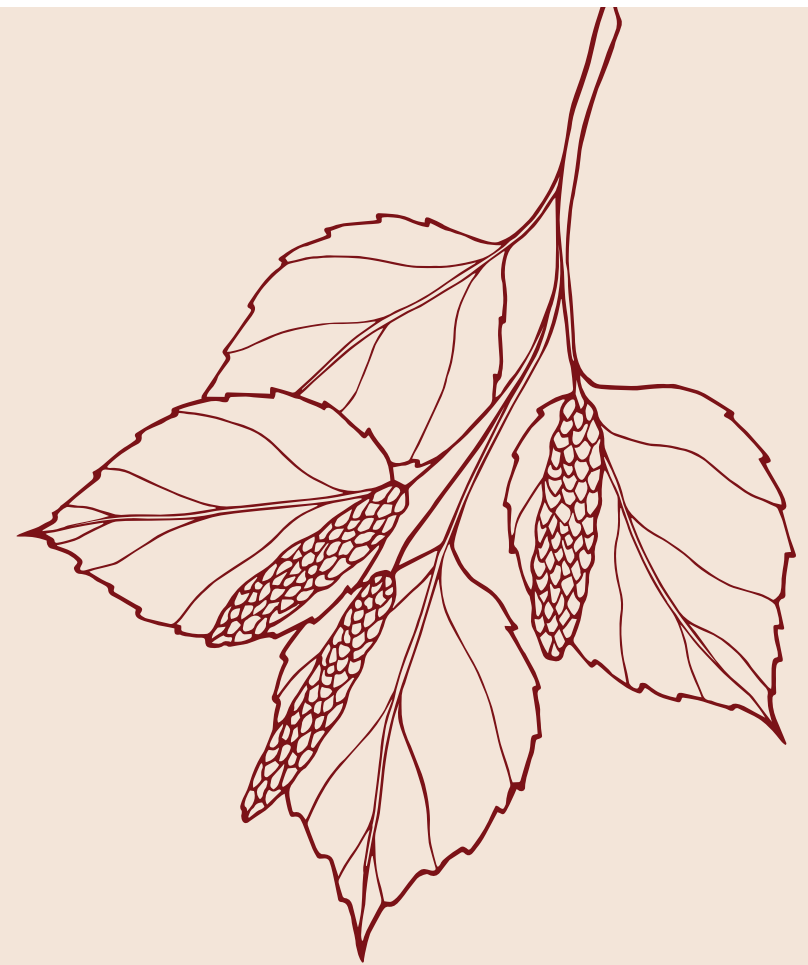


# The Mews

at

# The Brookdales



**Bishops**  
H O M E · B U I L D E R S



# Innovation. Design. Originality.



Since our establishment, we have been renowned for our commitment to excellence. Our focus lies in crafting architecturally traditional homes in the Hertfordshire and North London region. We take pride in our ability to seamlessly blend our high-specification homes with the local building style.

We employ the finest local craftsmen to ensure that the finished product meets the expectations of our esteemed customers.

Our experienced management team oversees every development, ensuring the highest quality at every step.

From our reputation for quality, to our customer service and after sales support, every detail of a Bishops home has been carefully designed with thought and deliberation to make your purchase one that you will never regret.





# Hendon & Surrounding Areas



Hendon, located in the vibrant northwest of London, captivates with its eclectic mix of residential areas, commercial hubs, and lush green spaces. This dynamic neighborhood buzzes with a multicultural energy, attracting individuals from all walks of life.

At the heart of Hendon lies the renowned Brent Cross Shopping Centre, a retail haven that tantalizes with a myriad of shops. From high-end favorites like Waitrose, Marks & Spencer, and the iconic John Lewis & Fenwick, to unique boutiques and specialty stores, retail therapy takes on a whole new meaning here. If you crave a more local shopping experience, the bustling Brent Street awaits, beckoning with its intriguing selection of stores.

Beyond its commercial allure, Hendon boasts a wealth of green spaces. Hendon Park, provides open fields, sports facilities, and vibrant playgrounds for individuals and families alike.

Transportation in Hendon is a breeze, ensuring you're effortlessly connected to the rest of London. Hendon Central station, served by the Northern Line, grants you quick access to the heart of London, effortlessly whisking you away to work or any destination your heart desires.

In Hendon, a tapestry of cultures blends seamlessly, creating an irresistible allure. The community's spirit is palpable, and the possibilities are endless. Prepare to be captivated by the edgy charm and dynamic lifestyle that define this extraordinary neighbourhood.



BRENT CROSS

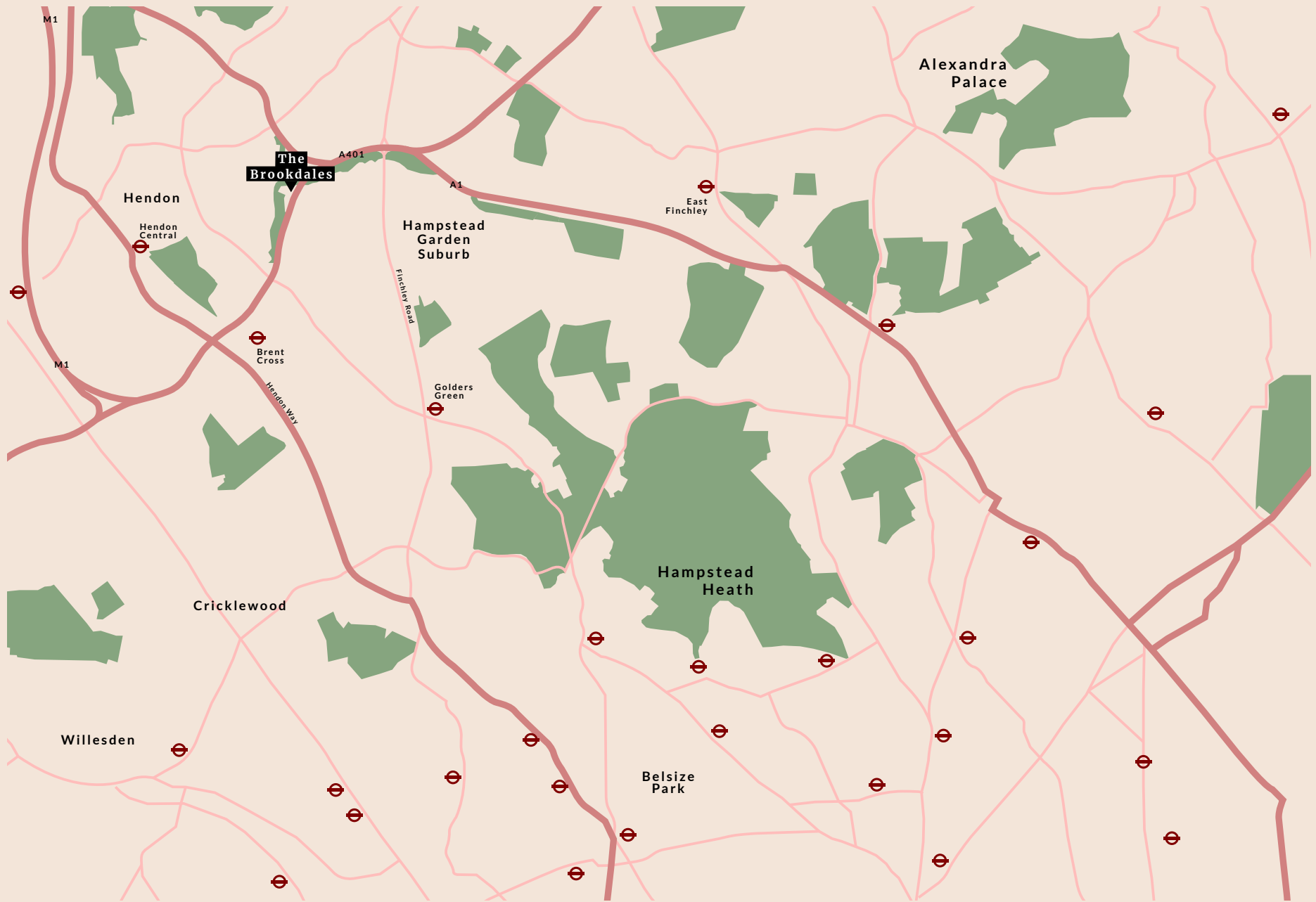




# Transport

Outstanding transportation connections provide quick and convenient access to the capital and beyond. Take the M1 for traveling north or the A41 south for a 45-minute trip to reach Central London.

Hendon Central and Brent Cross Stations are merely 3 and 4 minutes away from your residence. Whether it's for work or leisure, if you desire to journey to more exotic destinations, London City and Heathrow Airports are approximately 13 miles away.





# Green Spaces



The Brookdales offers a fantastic selection of nearby parks and hiking trails to enhance your life. Hendon is a leafy suburb with plentiful green spaces. Hampstead Heath with Kenwood House run by English Heritage is just a short distance away.

You can venture to Hampstead Heath with your family or enjoy showing your visitors the fantastic delights of the area, including the breath-taking view of London's skyline and then go on to enjoy some tasty refreshments in The Brew House eatery. From the Heath it is an easy

ramble into Hampstead itself to enjoy the delights of numerous eateries, drinking establishments and coffee houses.

Dollis Valley Greenwalk is a 10-mile walk linking green spaces along the Dollis Valley, starting in Moat Mount, Mill Hill through Barnet and into Hampstead Heath.

Whether you are devoted to golf, sailing at the Welsh Harp Sailing Club, swimming in the open pool at Hampstead Heath, residing close by at The Brookdales has something for you.





# The Start of Perfection

It's the place where you spend precious time with family or socialising with friends. Your home will be a place where you can enjoy life in the excellent design of your spacious surroundings.

Your bedroom is a private retreat where you can unwind and escape from the stresses of daily life. The

luxurious ensuite that accompanies the main bedroom provides you with ample space to indulge in self-care.

Even on the coldest nights, you will feel cosy and comfortable in your bedroom. The underfloor heating system covers every inch of the house, ensuring that you stay warm and toasty during chilly winters.







# Look & Feel

The ground floor kitchen/living area is enhanced with integrated NEFF appliances and sleek units. The spacious layout offers ample space for all your culinary adventures, while the bi-fold doors connecting to the garden create the perfect space for entertaining guests. Each house boasts an extra room on the upper floor, adaptable for use as a study or bedroom, ensuring you have ample flexibility for remote work or homeschooling.

Every also house features bespoke kitchen and bathroom designs, ensuring that no two units are identical. This approach guarantees a

unique touch for each living space. Moreover, all residences are equipped with a W/C, a family bathroom, and a master en-suite, all of which showcase meticulous tiling using premium materials.

To prioritise serenity and minimise disturbances, the development meticulously addresses every aspect, from an external acoustic sound barrier along the perimeter to internally installed double glazed windows fortified with acoustic layers. Notably, the ventilation system is entirely automated, eliminating the need for trickle vents while maintaining optimal air circulation.



\*These images are a representation of the fittings supplied only



# Site Map

Step into the world of Brookdales, where safety, aesthetics, and convenience harmoniously converge. As you approach our community, you'll be greeted by a central entrance, complete with a sophisticated video entry system, ensuring security is a top priority.

Upon entering, you'll be guided by the warm glow of an expansive LED-lit walkway. As you explore further, you'll discover our meticulously maintained shared gardens, a

serene oasis protected by a 2.6m acoustic fence. These gardens are meticulously curated, adorned with a myriad of plants, vibrant flowers, and graceful birch trees.

For those with an active or eco-conscious lifestyle, we've designed easy-to-access bike storage facilities. Whether you're an avid cyclist or simply prefer an environmentally friendly mode of transportation, our bike storage areas are conveniently located, encouraging a sustainable way of living.



Bicycle Rack

1f

1e

1d

1c

1b

1a

Walkway

Walkway

Refuse & Recycling

# House - 1a



- Two bedroom
- 129 m<sup>2</sup>
- 1388.54 ft<sup>2</sup>

## *Lower Ground Floor*

**Double Garage**

5.00 x 5.30m

## *Ground Floor*

**Kitchen/Lounge**

4.05 x 8.75m

**Dining Room**

3.34 x 4.25m

## *First Floor*

**Bedroom 1**

3.70 x 4.30m

(into recess)

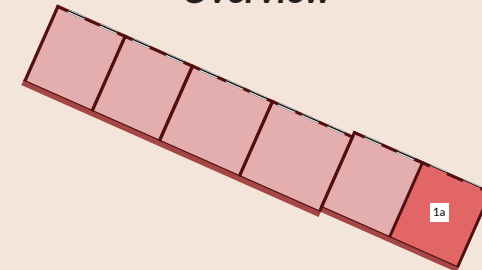
**Bedroom 2**

4.20 x 3.6m

**Study**

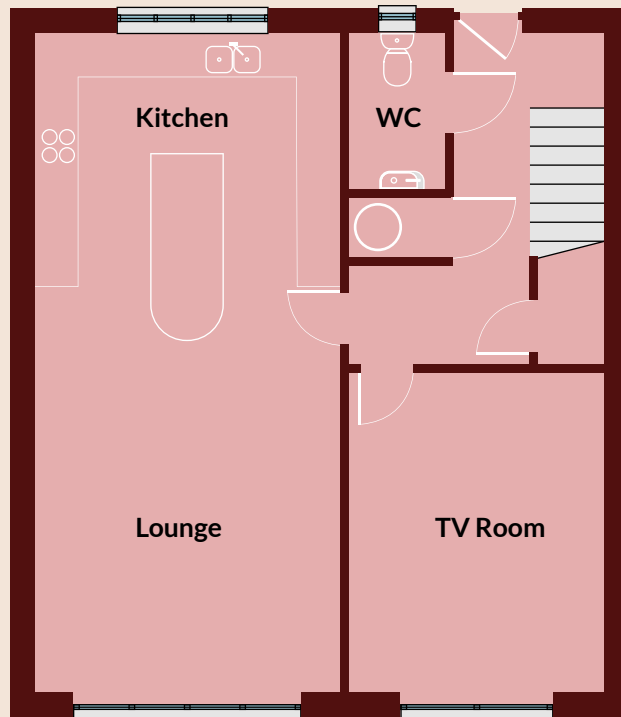
2.64 X 3.21m

## *Overview*

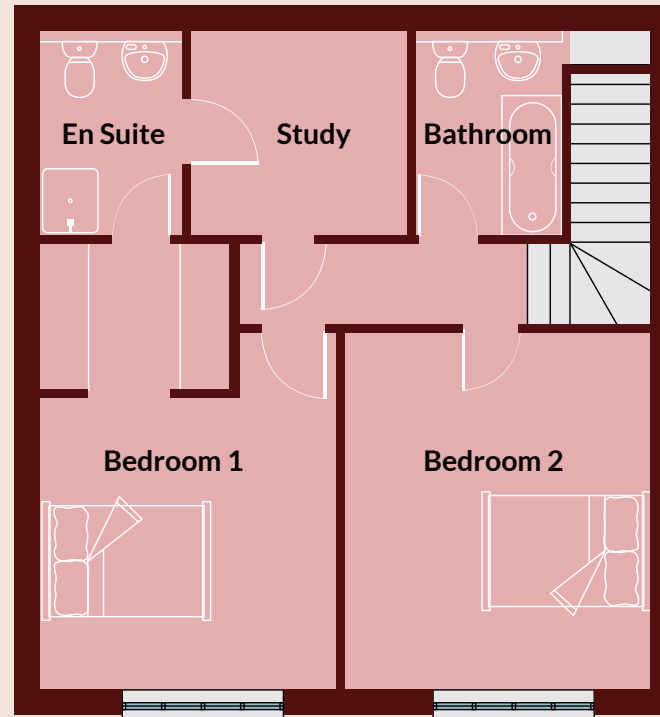




**Ground Floor**



**First Floor**



# House - 1b



- Two bedroom
- 129 m<sup>2</sup>
- 1388.54 ft<sup>2</sup>

## *Lower Ground Floor*

**Double Garage**

5.00 x 5.30m

## *Ground Floor*

**Kitchen/Lounge**

4.05 x 8.75m

**Dining Room**

3.34 x 4.25m

## *First Floor*

**Bedroom 1**

3.65 x 4.30m

(into recess)

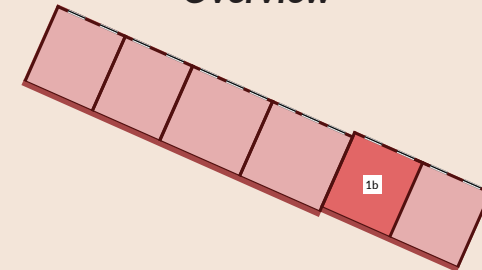
**Bedroom 2**

4.3 x 3.6m

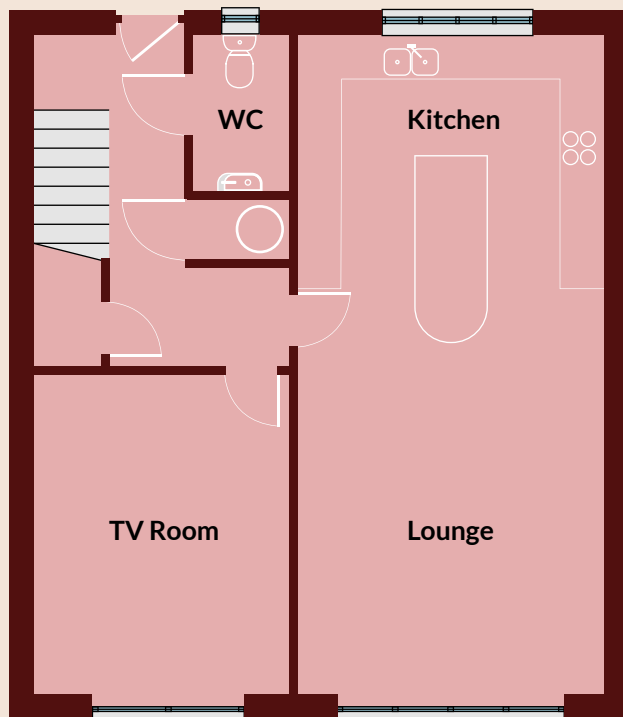
**Study**

2.64 X 3.21m

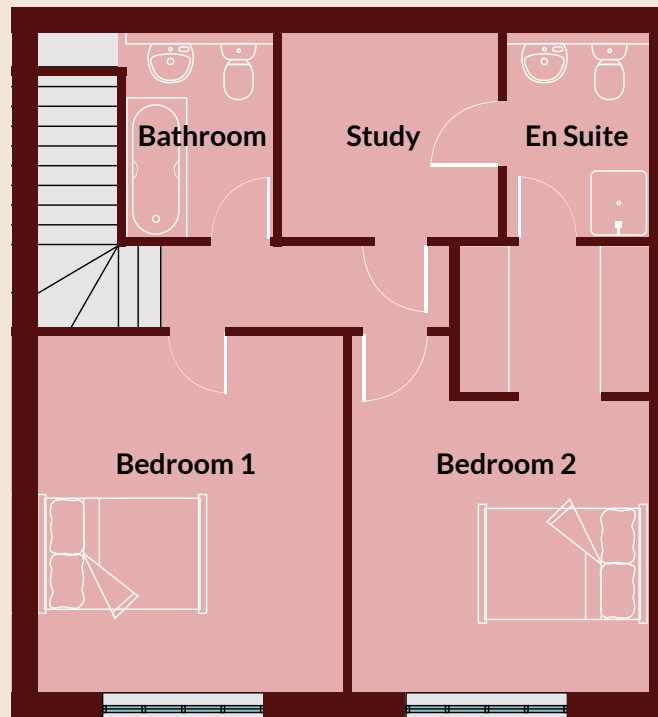
## *Overview*



**Ground Floor**



**First Floor**



# House - 1c



- Three bedroom
- 150 m<sup>2</sup>
- 1614.59 ft<sup>2</sup>

## *Lower Ground Floor*

### **Double Garage**

5.00 x 5.30m

## *Ground Floor*

### **Kitchen/Lounge**

4.05 x 8.75m

### **Dining Room**

3.34 x 4.25m

## *First Floor*

### **Bedroom 1**

4.20 x 3.00m

### **Dressing Room**

4.20 x 3.00m

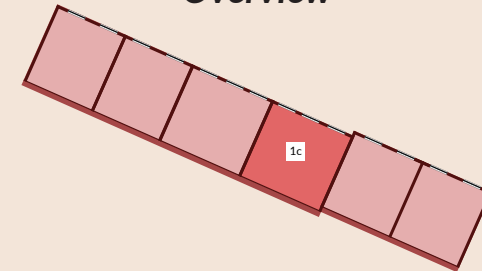
### **Bedroom 2**

4.20 x 3.00m

### **Bedroom 3**

4.35 x 2.65m

## *Overview*



*Ground Floor*



*First Floor*



# House - 1d



- Three bedroom
- 150 m<sup>2</sup>
- 1614.59 ft<sup>2</sup>

## *Lower Ground Floor*

**Double Garage**

5.00 x 5.30m

## *Ground Floor*

**Kitchen/Lounge**

4.05 x 8.75m

**Dining Room**

3.34 x 4.25m

## *First Floor*

**Bedroom 1**

4.20 x 3.00m

**Dressing Room**

4.20 x 3.00m

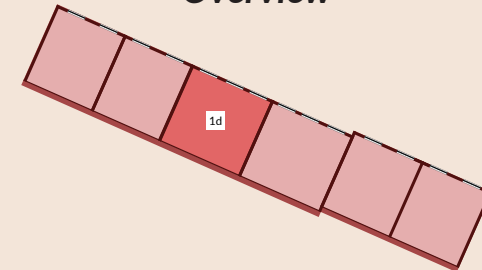
**Bedroom 2**

4.20 x 3.00m

**Bedroom 3**

4.35 x 2.65m

## *Overview*



*Ground Floor*



*First Floor*



# House - 1e



- Two bedroom
- 129 m<sup>2</sup>
- 1388.54 ft<sup>2</sup>

## *Lower Ground Floor*

**Double Garage**

5.00 x 5.30m

## *Ground Floor*

**Kitchen/Lounge**

4.05 x 8.75m

**Dining Room**

3.34 x 4.25m

## *First Floor*

**Bedroom 1**

3.70 x 4.30m

(into recess)

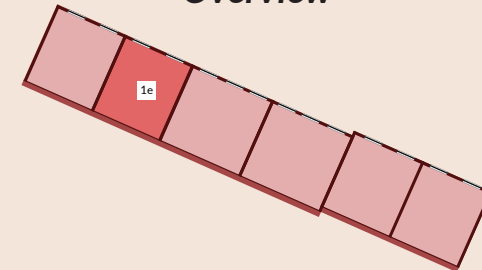
**Bedroom 2**

4.20 x 3.6m

**Study**

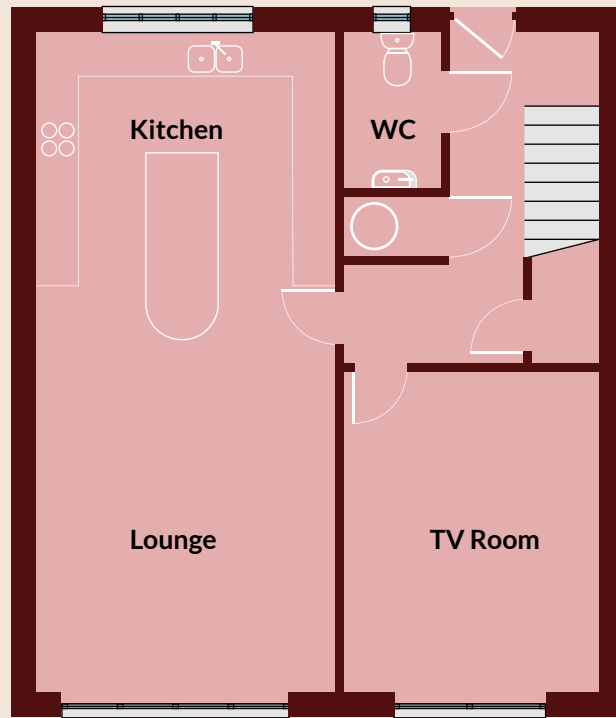
2.64 X 3.21m

## *Overview*

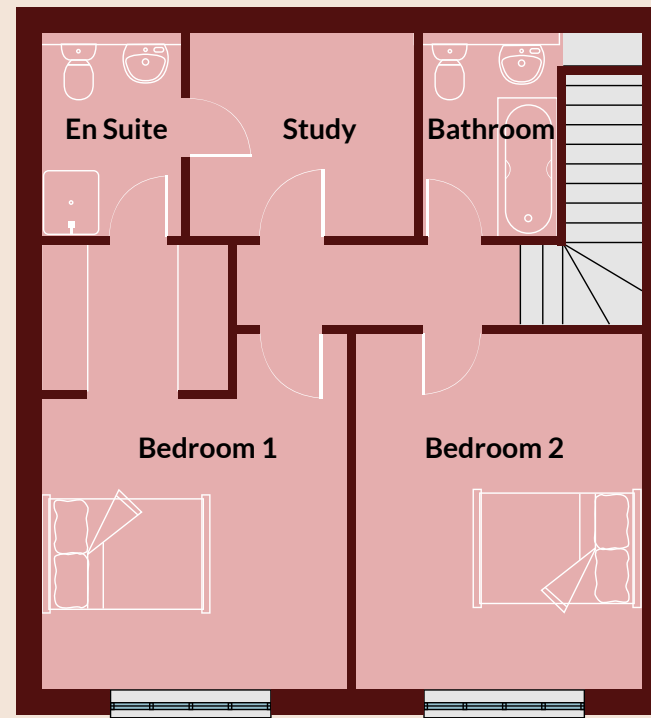




### Ground Floor



### First Floor



# House - 1f



- Two bedroom
- 129 m<sup>2</sup>
- 1388.54 ft<sup>2</sup>

## *Lower Ground Floor*

**Double Garage**

5.00 x 5.30m

## *Ground Floor*

**Kitchen/Lounge**

4.05 x 8.75m

**Dining Room**

3.34 x 4.25m

## *First Floor*

**Bedroom 1**

3.70 x 4.30m

(into recess)

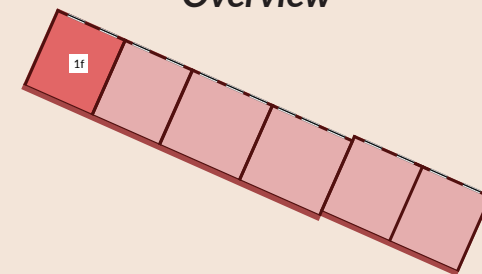
**Bedroom 2**

4.20 x 3.6m

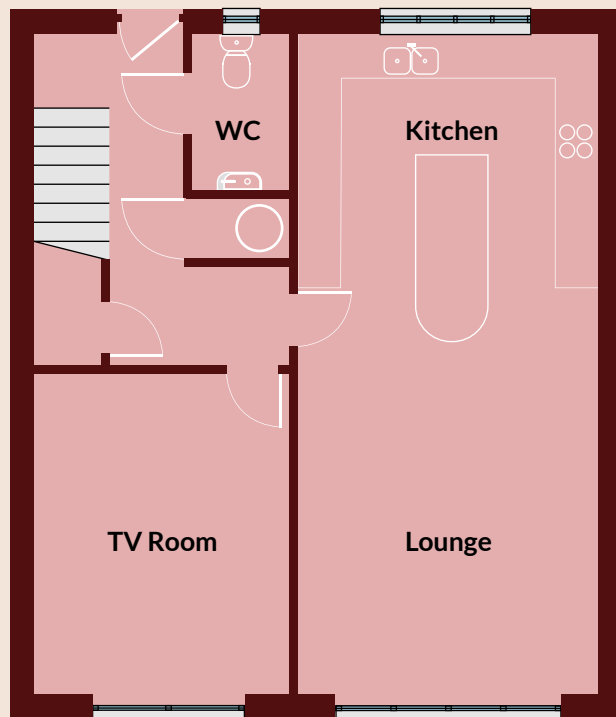
**Study**

2.64 X 3.21m

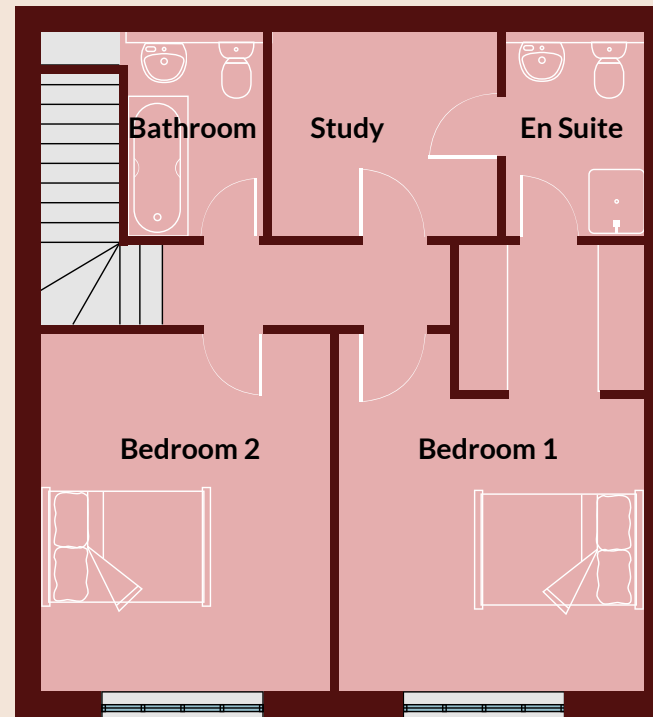
## *Overview*



### Ground Floor



### First Floor



# Specification

## KITCHEN/LIVING

- Quartz worktop – Aconbury Matt Kitchen
- Franke LAX Stainless steel double bowl sink
- Franke Krios Chrome Taps
- Neff Frost Free Built in fridge freezer
- Neff B1 Single oven
- Neff C1 Combi Microwave & Oven
- Neff T Induction Hob

- Neff D Telescopic Cooker Hood
- Neff S Int. Dishwasher
- Neff V Int. Washer/Dryer
- Glass painted hob Splashback
- ISE Waste Disposal with Air Switch
- Large central island with stainless steel Sensio Pod Pull Up sockets

## BEDROOM

- Fitted Wardrobes (optional extra)

## BATHROOM (FAMILY)

- Eastbrook Rockall Single Ended twin grip bath



- Crosswater showering Kai 6 single bath screen
- Novum Mineral Marble Washbasin
- Duravit Floor-mounted toilet, rimless
- Duravit Seat & Cover Eco Removable
- Grohe concealed Flushing Cistern
- Eastbrook Wingrave Straight multi rail chrome
- Crosswater Showering Stone Resin Tray
- Crosswater Showering High Flow Shower Waste White/ Chrome
- Crosswater Showering Svelte 8 Side Panel
- Hansgrohe Vernis Shape Showerpipe

### COMMUNAL AREAS

- Landscaped communal gardens
- Private entrance to walkway
- External lighting

### HALLWAY

- Video Entry System
- Tile Flooring
- Velux sun tunnel

### CLOAKROOM

- Duravit Floor-mounted toilet, rimless



- Duravit Seat & Cover Eco Removable
- Novum Arc 40cm Wall Hung Unit
- Novum Arc Washbasin

### THROUGHOUT

- Underfloor heating
- Fibre-optic broadband
- Spot lighting
- Brushed metal sockets with USB's

### OUTSIDE

- Double garage with EV charging and electric safety doors
- Optional single garage
- External lighting on walkway and communal garden space

\*These images are a representation of the fittings supplied only

# Specification

## GLAZING

- Aluminium triple glazed windows and doors with an acoustic layer in anthracite grey

## ELECTRICAL

- Wired for fibre-optic broadband
- Hamilton brushed metal sockets and switches
- LED downlights
- TV/satellite and data ports

- Banham Security System
- Powered Velux windows
- Velux sun tunnel

## OTHER

- Video entry phone system
- Underfloor heating
- Fire alarm system
- Dulux diamond matt finish to all walls and ceilings
- Chrome ironmongery

## WARRANTY

- 10 year build zone warranty
- 7 year underfloor heating warranty



\*These images are a representation of the fittings supplied only

# Get in Touch

## **Bishops Home Builders**

165 High Street  
Barnet  
Hertfordshire  
EN5 5SU

020 8441 8844

[info@bishopshomebuilders.co.uk](mailto:info@bishopshomebuilders.co.uk)

[www.bishopshomebuilders.co.uk](http://www.bishopshomebuilders.co.uk)



## **Winkworth**

All enquiries please contact one of your local Winkworth branches below:

### **Winkworth Hendon**

49 Brent Street  
Hendon, NW4 2EA  
+44 (0) 20 8202 1031  
[hendon@winkworth.co.uk](mailto:hendon@winkworth.co.uk)

### **Winkworth Golders Green**

891 Finchley Road  
Golders Green, NW11 8RR  
+44 (0) 20 8458 8313  
[goldersgreen@winkworth.co.uk](mailto:goldersgreen@winkworth.co.uk)

### **Winkworth Finchley**

364 Regents Park Road  
Finchley, N3 2LJ  
+44 (0) 20 8349 3388  
[finchley@winkworth.co.uk](mailto:finchley@winkworth.co.uk)



## Winkworth

All enquiries please contact one of your local Winkworth branches below:

### Winkworth Hendon

49 Brent Street  
Hendon, NW4 2EA  
+44 (0) 20 8202 1031  
hendon@winkworth.co.uk

### Winkworth Golders Green

891 Finchley Road  
Golders Green, NW11 8RR  
+44 (0) 20 8458 8313  
goldersgreen@winkworth.co.uk

### Winkworth Finchley

364 Regents Park Road  
Finchley, N3 2LJ  
+44 (0) 20 8349 3388  
finchley@winkworth.co.uk

Disclaimer: The information presented, including computer-generated images, serves only as a reference and may be subject to change. These details should be considered as general guidance and should not be relied upon as a precise description of any specific aspects outlined by regulations under the Consumer Protection from Unfair Trading Regulations 2008. They do not form a contractual agreement or warranty. Dimensions should not be used to determine carpet sizes, appliances, or furniture. Bishops Homebuilders follow a policy of ongoing product development, and specific features such as specifications, windows, and exterior treatments may vary.